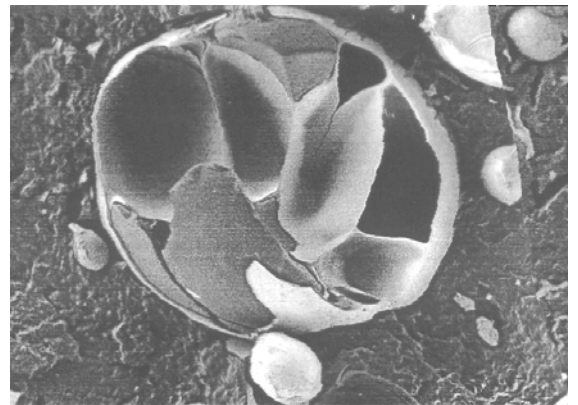


# eurocell<sup>®</sup>

## average technical data

### Chemical Analysis:

SiO <sub>2</sub> (no free quartz!)	73 %
Al <sub>2</sub> O <sub>3</sub>	17 %
CaO	1 %
K <sub>2</sub> O	5 %
Na <sub>2</sub> O	3 %
other elements	traces
surface moisture	< 0,2 %
pH-value	6,5 - 7,5
free quartz	none
filling	air



### Screen analysis:

	<b>eurocell<sup>®</sup> 140</b>	<b>eurocell<sup>®</sup> 145</b>	<b>eurocell<sup>®</sup> 150</b>	<b>eurocell<sup>®</sup> 300</b>
particle size	5-140	5-145	5-150	5-300
∅ particle size	35	40	45	75
typ. screen analysis > 290 µm	-	-	-	max. 5 %
150 - 290 µm	max. 1 %	max. 1 %	max. 3 %	13 %
74 - 150 µm	10 %	15 %	23 %	32 %
< 74 µm	89 %	84 %	74 %	50 %

### Physical data:

effective density	g/cm <sup>3</sup>	0,3	0,26	0,23	0,18
bulk weight	kg/m <sup>3</sup>	180	160	135	115
bag weight	kg	18	16	13,5	11,5
pallet weight	kg	288	256	216	184
surface treatment		possible	possible	possible	possible
melting point	°C	1260	1260	1260	1260
colour		white	white	white	white
thermal conductivity	W/mK	0,062	0,059	0,057	0,052