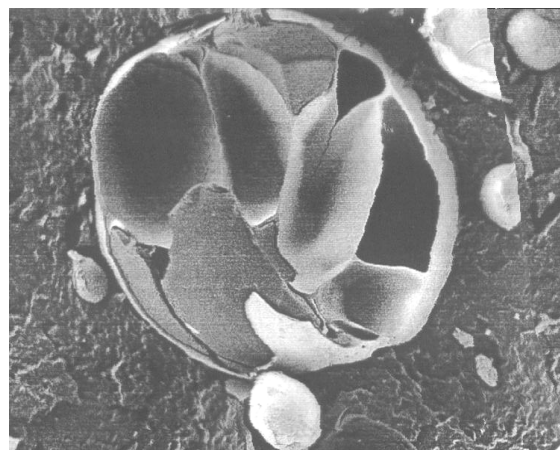


Average Technical Data

Typical Chemical Analysis:

SiO ₂ (no free quartz!)	73 %
Al ₂ O ₃	17 %
CaO	1 %
K ₂ O	5 %
Na ₂ O	3 %
other elements	traces
surface moisture	< 0,2 %
pH-value	6,5 - 7,5
free quartz	none
filling	air
unburnable	A1



Screen analysis:

	eurocell[®]	eurocell[®]	eurocell[®]	eurocell[®]
	142	152	302	502
	(-H)	(-H)	(-H)	(-H)
particle size	5-140	5-150	5-300	5-500
∅ particle size	52	62	70	80
top cut	200	300	300	500
typ. screen analysis:> 300 µm	- %	- %	- %	5 %
200 - 300 µm	- %	max. 5 %	10 %	10 %
75 - 200 µm	20 %	22 %	35 %	35 %
< 75 µm	80 %	73 %	53 %	50 %

Physical data:

effective density	g/cm ³	0,3	0,24	0,2	0,18
bulk weight	kg/m ³	145	135	120	105
bag weight netto	kg	14,5	13,5	12	10,5
bags / pallett	pc.	18 / 36	18 / 36	18 / 36	18 / 36
pallett weight netto	kg	261 / 522	243 / 486	216 / 432	189 / 378
big-bag netto	kg	270	250	200	175
surface treatment		see separate data sheet			
melting point	°C	1260			
colour		white			
L*a*b*		90 / 1 / 2,5			
thermal conductivity λ	W/mK	0,059	0,057	0,052	0,051